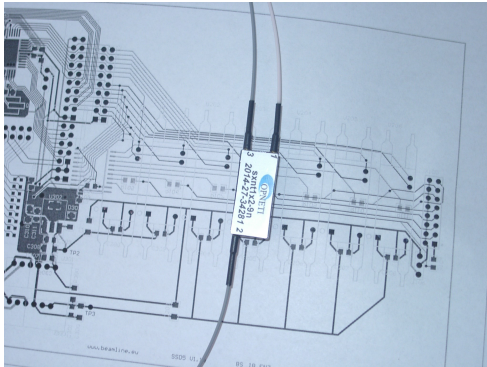




ENZ - eBrick LAN-OS 56x Series

MEMS fiber-optic switch with Ethernet 10/100 MBit interface



Applications:

- signal switching and routing
- protection switching
- reconfiguration
- optical subsystems
- array integration
- optical network switching
- optical performance monitoring
- instrumentation
- measurement

Model: eBrick-561-12

General Characteristics

- operating wavelengths from 600 nm to 1700 nm
- multimode 50µm
- MEMS switch, non-latching
- OS architecture 1x2
- insertion loss ≤ 1.2 dB, typ 0.4 dB
- polarization dependent loss ≤ 0.15 dB
- return loss ≥ 30 dB, typ 40 dB
- cross talk ≥ 40 dB typ 60 dB
- switch speed ≤ 20 ms, typ 2 ms
- repeatability ≤ 0.005 dB
- durability 10^9 cycles
- LAN connector RJ45
- Ethernet 10/100 MBit
- optical connector LC-MM (y=1)
- power supply connector screw type terminal block 2-pole pluggable
- external supply voltage 12 VDC (± 0.5 V)
- current ≤ 180 mA, typ. 100 mA
- operating temperature 0..+50°C
- humidity 20..85% (non-condensing)
- desktop housing (163 mm x 103 mm x 42 mm)

Further eBrick OS Architectures

eBrick-56y-14 : 1x4
eBrick-56y-22 : 2x2
eBrick-56y-24 : 2x4

1x8, 2x8, Banyan 4x4 non-blocking crossbar switch,
customer specific application architecture
(models require larger housings)

Available Connectors

LC (y=1)
FC (y=2)
SC (y=3)

Optional on Request

19"/3U device
OEM (euro size card 100 mm x 160 mm)
single mode, latching OS

Please contact us for more details!